



Download the App

Go to the App Store (Apple) or Google Play (Android) and search for 'tigerconnect'.



Install TigerConnect

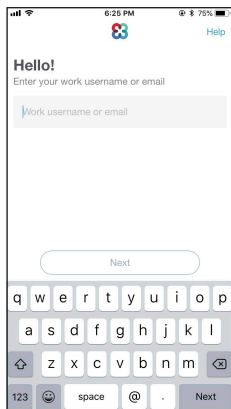
iOS Tap Get, then Install (you may have to enter your Apple ID Password).
Android Tap TigerConnect Secure Messenger App, then **Install**. Finally, tap **Accept**.



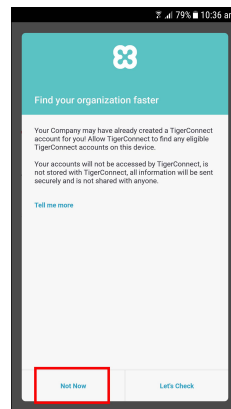
Log In

Open the app and tap **Get Started**. You will see one of the following screens, depending on your device. Follow the easy instructions to log in to TigerConnect.

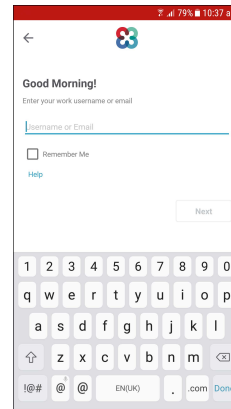
Login with your Full BSLMC Username (**slh\username**) and existing Network Password



iOS



Android



Android

Android only - To ensure you are using your TigerConnect login credential, tap **Not Now** after tapping **Get Started**.



Find a Co-Worker

Tap on the Compose icon and enter a co-worker's name.



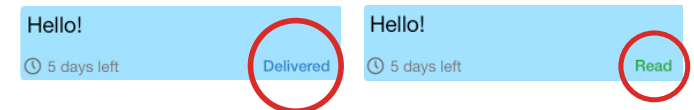
Send a Message

Type in the box as shown below.




Message Status

When your message is **Delivered** and **Read**, the message status will update in the conversation thread.



Incoming Messages

iOS/Android 
When you have a new message, a notification badge will appear on the iOS app icon as well on supported Android devices .



Android Only When you have a new message, a notification badge will also appear in the left corner of your screen.